

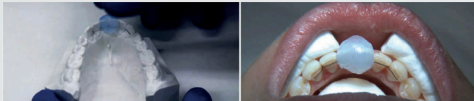
Before the MEMOTAIN® Retainer is placed, the lingual surfaces of the teeth must be thoroughly cleaned, even if they already appear clean to the naked eye. You should not use polishing paste, but instead an ultrasonic cleaner. The additional use of a sandblaster or AirFlow® will improve the durability of the bond.



You should ensure optimal isolation of the lingual surfaces during the bonding process. A Parotissroll sublingually, a Dry:Angle and cotton rolls are recommended. The use of DryField® or other tongue guard ensures perfect results.



You should start by etching only the lingual surfaces of the canines. A distinct etch pattern should be recognizable. First, coat only the canines with primer/bonding agent.



Grip the MEMOTAIN® by the transfer cap and place it in the patient's mouth.



Model the resin bonding sites on the canines and cure them.

Note regarding the maxilla:

Use articulating film to check for any early contacts on the resin bonding sites, and remove them.

Which resin?

For cementing a MEMOTAIN® retainer, both high- and low-filled composites can be used. Ensure as smooth a transition as possible between the bonding site and the natural tooth.

Low-filled composites (Flow):

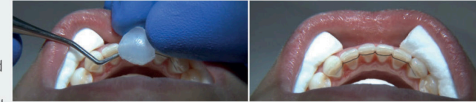
These composites ensure for a smooth surface that is comfortable for the patient.

High-filled composites:

The higher proportion of fillers makes this resin more resistant to abrasion compared to flowable composites. However, the high-filled resin is rougher for the tongue. The sensation of roughness can be reduced by subsequent coating with bonding agent.

Other information:

When making a new lingual retainer, you should remove the old resin bonds before taking the impression.



Secure the MEMOTAIN® Retainer with an instrument (ligature adapter, Heidemann spatula or probe) while carefully removing the transfer cap.



Etch the four remaining anterior teeth and coat them with primer/bonding agent. Then model the resin bonding sites on these four anterior teeth and cure them.



The perfectly integrated MEMOTAIN® Retainer in the patient's mouth.

M
MEMOTAIN®

ORTHO
partner
À la pointe de l'innovation / Leading Innovation

12 Rue du Sergent Bobillot
93100 Montreuil

Tel: 0148701269
info@myorthopartner.com